

SPECIFICATION

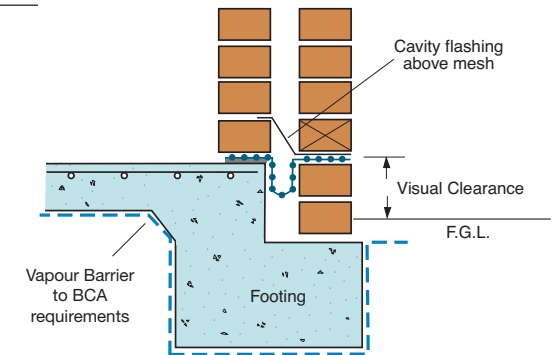
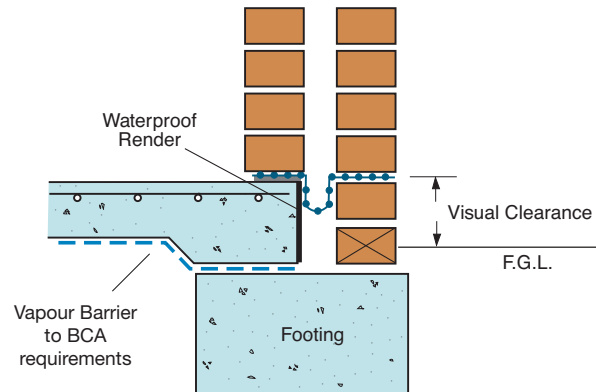
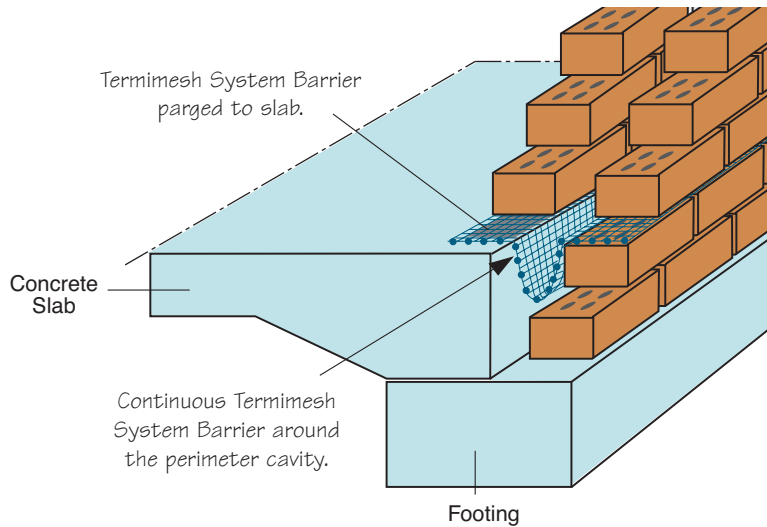
(for illustration purposes only)

STAINLESS STEEL MESH INSTALLATION PERIMETER INSTALLATION Cavity Wall Post-Pour Double Brick Construction

(Generally W.A., South West Coastal Plain)



102B



The Termimesh System Barrier is parged (bonded) to the top of the slab, stepped down into the cavity and run on the course of the outside brickwork level with the top of the slab.

COPYRIGHT ©

TMA Corporation Pty Ltd
48 Century Road
MALAGA Western Australia 6090
ABN 90 009 452 475

Date: Jul 2006	Drawn: WB/SM	Scale: NTS
Updated: Dec 2011		

The Termimesh System
For further information or additional specifications,
contact 1800 632 111 or www.termimesh.com

SPECN102B
Diag102B+.eps
Diag63(iii).eps
Diag63(iii)fl.eps

Code
Spec
1.2