

SPECIFICATION



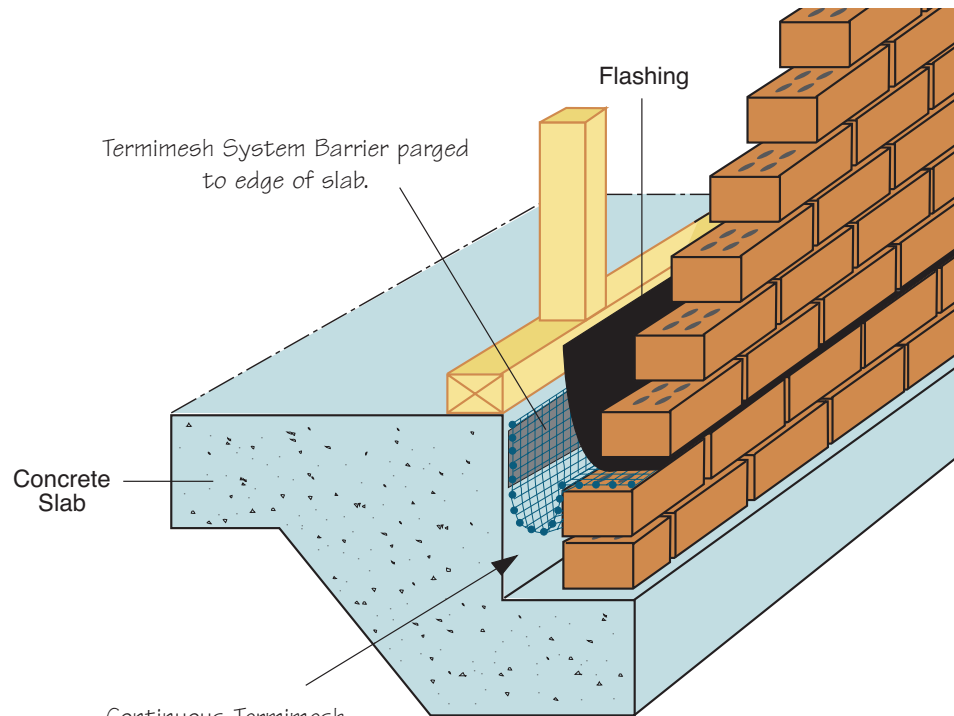
(for illustration purposes only)

STAINLESS STEEL MESH INSTALLATION PERIMETER INSTALLATION Cavity Wall for Brick Veneer on Rebated Slab

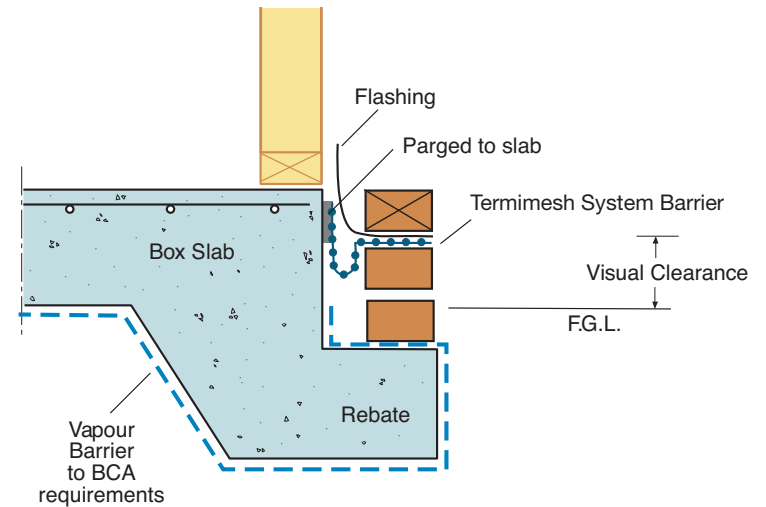
102C



Global-Mark.com.au®
Manufactured under a
Management System certified as
complying with ISO 9001:2008.



Continuous Termimesh System Barrier around the perimeter cavity.



The Termimesh System Barrier is parged (bonded) to the side of the rebate, stepped down into the cavity and generally run on the second course of the outside brickwork below the flashing or dampcourse.

COPYRIGHT ©

TMA Corporation Pty Ltd
48 Century Road
MALAGA Western Australia 6090
ABN 90 009 452 475

Date: Dec 2004	Drawn: WB	Scale: NTS
Updated: Dec 2011		

The Termimesh System
For further information or additional specifications,
contact 1800 632 111 or www.termimesh.com

SPECN102C+
Diag102C+.eps
DiagQld2Biv.eps

Code
Spec
1.4