

SPECIFICATION

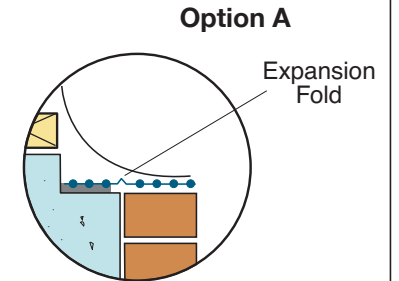
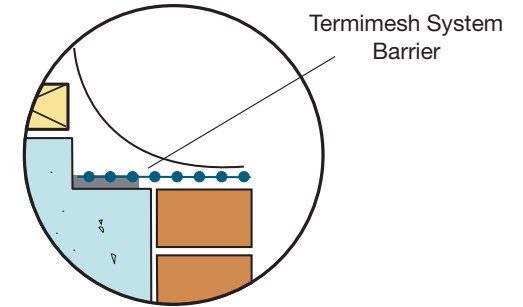
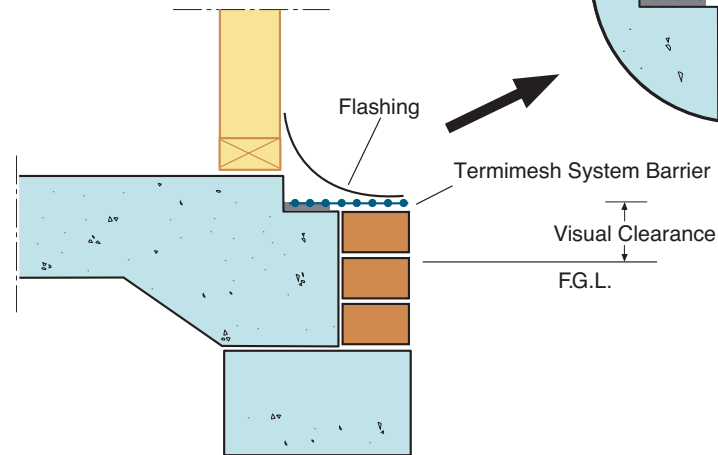
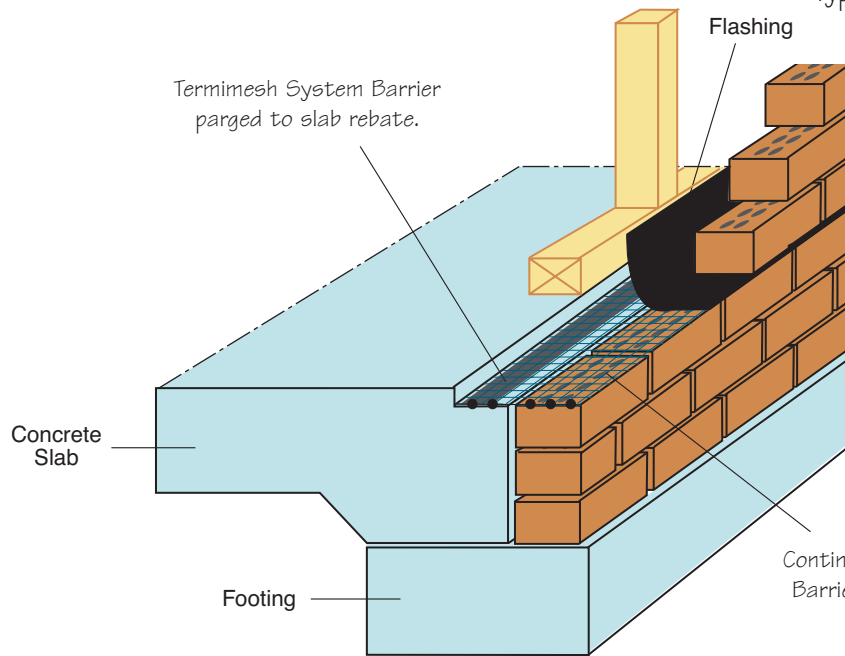


102D

(for illustration purposes only)

STAINLESS STEEL MESH INSTALLATION PERIMETER INSTALLATION Cavity Wall – Rebated Slab – Flush Brickwork

Typical to Queensland and Northern N.S.W.



The Termimesh System Barrier is parged (bonded) to the base of the rebate and taken across to the outside edge of the brickwork.

Within 28 days of the concrete pour there is a higher possibility of slab shrinkage resulting in the construction joint opening between the brickwork and the slab. For installations within the 28 days a ridge or concertina fold must be used to allow for expansion, as shown in Option A.

COPYRIGHT ©

TMA Corporation Pty Ltd
48 Century Road
MALAGA Western Australia 6090
ABN 90 009 452 475

Date: Dec 2004	Drawn: WB	Scale: NTS
Updated: Dec 2011		

The Termimesh System
For further information or additional specifications,
contact 1800 632 111 or www.termimesh.com

SPECN102D
Diag102D+.eps
DiagQld2A.eps
DiagQld2AAi.eps
DiagQld2AAii.eps

Code
Spec
1.5