



ORIGINAL TERMITE BARRIER

TERMIMESH SYSTEM PRODUCT INFORMATION



THE TERMIMESH PHILOSOPHY IS
SIMPLE. DESIGN AN EFFECTIVE
PRODUCT. INSTALL IT PROPERLY.
ENCOURAGE CUSTOMERS TO
LOOK AFTER IT.



UNIQUE TERMITE CONTROL BARRIER THE OBVIOUS CHOICE

Why do quality builders, leading architects & astute homeowners choose the Termimesh System?

- Ultra marine grade stainless steel mesh
- Environmentally friendly, flexible, non-toxic and long-life material
- Can be installed in all types of structures
- Quality controlled from manufacture to installation
- Available throughout Australia
- A once-off installation with no retreatments necessary
- Tested and approved by authorities throughout the world
- Backed by the outstanding and industry leading Pledge Guarantee
- A proven track record with hundreds of thousands of installations throughout Australia alone
- The Termimesh System has the backing of Australia's leading specialist termite control company – TMA Corporation



ULTRA MARINE GRADE STAINLESS STEEL MESH

TERMITE RESISTANT, POISON-FREE & LONG-LIFE

The Australian-developed Termimesh System is an environmentally friendly termite barrier which includes a composite of superior quality materials and thoroughly researched installation techniques. It is only installed by licensed and accredited professional technicians. The three major components of the Termimesh System are:

- an extremely durable TMA725 grade stainless steel mesh. This alloy is exclusive to the Termimesh Group and is of considerably higher quality than standard marine grade stainless steel;
- a specially formulated bonding cement (Termiparge); and
- high quality stainless steel clamps.

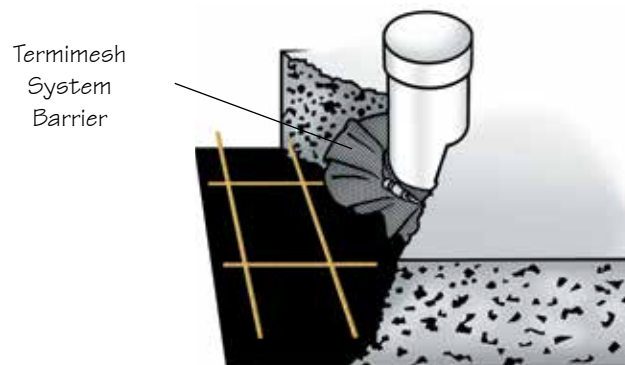


**Fine, Strong and Durable
Stainless Steel Mesh**

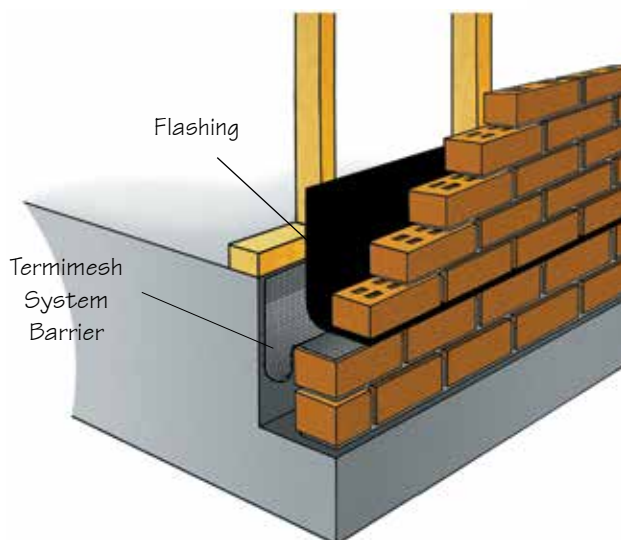
Termites cannot get through the mesh because it is **too small to squeeze through** and **too hard to chew through**.

The Termimesh System has set the benchmark in termite management by providing a durable barrier without the need to use worrying chemicals. The System was originally developed to counter strong community and government concerns about the environmental and health implications of long-term chemicals. These chemicals were banned in 1995 and replaced with short-term poisons which provide a temporary barrier and require ongoing retreatments.

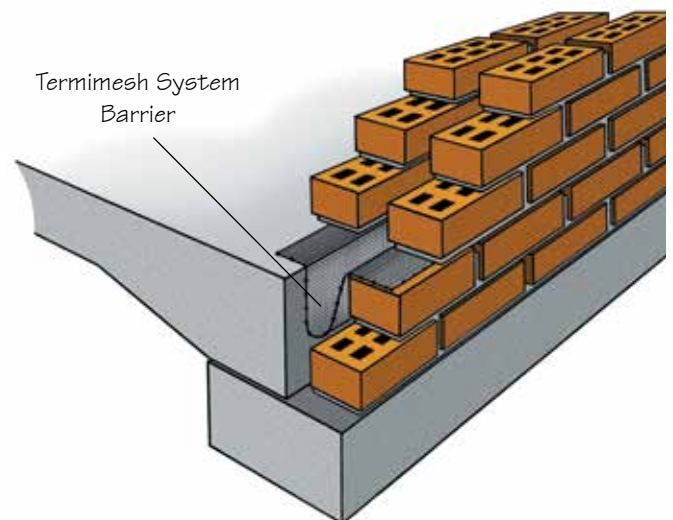
Since its inception in the late 1980s, the Termimesh System has established new industry-leading standards in the design of effective and durable termite barriers, achieving the highest levels of accreditation and endorsement from building authorities in Australia and other countries.



Service Pipe Installation



Installation to Stud Wall Construction



Installation to Double Brick Construction



SERVICING AUSTRALIA

NATIONAL SUPPORT FOR THE TERMIMESH SYSTEM

The Termimesh System has the backing of Australia's leading specialist termite control company – TMA Corporation, which has been successfully operating for over 20 years. The Termimesh System is available at Licensed Service Centres throughout Australia and internationally.



QUALITY CONTROLLED

FROM MANUFACTURE TO INSTALLATION

Research and Development has been ongoing since 1990. One of the first governmental bodies to become involved with the Termimesh System was the CSIRO, which was contracted to test and retest the effectiveness of the mesh in the restraint of termites. Following the highly impressive results of that testing, the Termimesh System has been successfully accredited with many building-related bodies including Standards Australia and the Australian Building Codes Board.

Located at the TMA head office is an internationally recognised and acclaimed termite research laboratory. The research and development associated with the Termimesh System is a clear industry leader.

Installations: The mesh and other components are installed by strictly accredited professionals who undergo extensive quality control training and testing. Only installations of the highest standard are accepted. The TMA head office undertakes regular independent audits of personnel and installations.



WHY SELECT THE TERMIMESH SYSTEM?

LONG ESTABLISHED, PEACE OF MIND

- The patented system was the world's first environmentally friendly termite barrier made from **stainless steel mesh**.
- It provides the most **effective and durable** termite barrier*.
- The Termimesh System has been **researched and tested** at the highest level.
- It has been **approved and accredited** with certifications from all relevant government bodies.
- It has an impressive track record with **hundreds of thousands of installations** completed in Australia alone and with an **outstanding success rate**.
- Extremely **cost-effective**. There is no need for costly ongoing reapplications.
- Only Termimesh System comes with the market leading **PLEDGE GUARANTEE**. Pledge is a timber replacement guarantee which covers the installation, materials and ongoing effectiveness of the Termimesh System. The Pledge Guarantee** features a no dollar limit and the potential to extend the Guarantee on an ongoing basis with an approved annual inspection.
- It provides the homeowner with a **non-toxic** alternative that does not require retreatments. There are no chemical residues and it is safe to use around the house and close to where the children play.

** Under Australian Standard As 3660.1 termite barriers installed in new constructions are designed to deter concealed entry by termites from the soil. As part of a total termite management plan, at least annual termite inspections are strongly recommended. See your Termimesh Service Centre. ** The Termimesh Pledge Guarantee is limited and conditions apply.*

INSTALLATIONS FOR ALL CONSTRUCTIONS SUITABLE FOR ANY BUILDING TYPE

Termimesh installation techniques are normally used around service pipe entry points through the concrete slab, construction joints and perimeter wall cavities. Installation techniques vary depending on the design and construction features of your home, but the System can be installed in any building type using one or more of approximately **100 Termimesh Installation Specifications**, four of which are shown below.

SPECIFICATION
(for illustration purposes only)

STAINLESS STEEL MESH INSTALLATION
Termiflange
PENETRATION PROTECTION
Type 1 – Centre of Slab – Pre-Pour

TERMI MESH
ORIGINAL TERMITE BARRIER

109
Flanges

NOTE: Ridges may be inverted.

| | | | | |
|---|---|--|--|---------------------|
| TMA Corporation Pty Ltd 48 Century Road MALAGA Western Australia 6090 ABN 90 009 452 475 | COPYRIGHT © Date: Aug 2006 Updated: May 2011 | The Termimesh System For further information or additional specifications, contact 1800 632 111 or www.termimesh.com | SPECN109-1-COL Diag158a-eps Diag159a-eps | Code Spec 2.1 |
|---|---|--|--|---------------------|

SPECIFICATION
(for illustration purposes only)

STAINLESS STEEL MESH INSTALLATION
Termiflange
PENETRATION PROTECTION
Cluster Penetrations

TERMI MESH
ORIGINAL TERMITE BARRIER

NOTE: The Termimesh System Barrier Range is fixed so as not to interfere with the vapour barrier.

| | | | | |
|---|---|--|--|---------------------|
| TMA Corporation Pty Ltd 48 Century Road MALAGA Western Australia 6090 ABN 90 009 452 475 | COPYRIGHT © Date: Dec 2004 Updated: May 2011 | The Termimesh System For further information or additional specifications, contact 1800 632 111 or www.termimesh.com | SPECNClusterPlan DiagCluster1-eps DiagCluster2-eps DiagCluster3-eps | Code Spec 2.4 |
|---|---|--|--|---------------------|

SPECIFICATION
(for illustration purposes only)

STAINLESS STEEL MESH INSTALLATION
PERIMETER INSTALLATION
Cavity Wall for Brick Veneer
on Rebated Slab

TERMI MESH
ORIGINAL TERMITE BARRIER

102C

The Termimesh System Barrier is pargeled (bonded) to the side of the rebate, stepped down into the cavity and generally run on the second course of the outside brickwork below the flashing or dampcourse.

| | | | | |
|---|---|--|---|---------------------|
| TMA Corporation Pty Ltd 48 Century Road MALAGA Western Australia 6090 ABN 90 009 452 475 | COPYRIGHT © Date: Dec 2004 Updated: May 2011 | The Termimesh System For further information or additional specifications, contact 1800 632 111 or www.termimesh.com | SPECN102C-1 Diag102C-eps Diag102B-eps | Code Spec 1.4 |
|---|---|--|---|---------------------|

SPECIFICATION
(for illustration purposes only)

STAINLESS STEEL MESH INSTALLATION
CONTROL JOINT
PROTECTION

TERMI MESH
ORIGINAL TERMITE BARRIER

The Termimesh System Barrier is placed so as not to interfere with the vapour barrier.

| | | | | |
|---|---|--|---|---------------------|
| TMA Corporation Pty Ltd 48 Century Road MALAGA Western Australia 6090 ABN 90 009 452 475 | COPYRIGHT © Date: Dec 2004 Updated: May 2011 | The Termimesh System For further information or additional specifications, contact 1800 632 111 or www.termimesh.com | SPECNControlJoint DiagControlJoint-eps DiagControlJoint-eps Diag23-8-eps | Code Spec 9.7 |
|---|---|--|---|---------------------|

THE TERMIMESH SYSTEM HAS A **CODEMARK CERTIFICATE OF ACCREDITATION**.



TMA CORPORATION IS A **QUALITY ENDORSED COMPANY**.





TERMIMESH SYSTEM PRODUCT INFORMATION

